

**This electronic collection of documents is provided
for the convenience of the user
and is Not a Certified Document –**

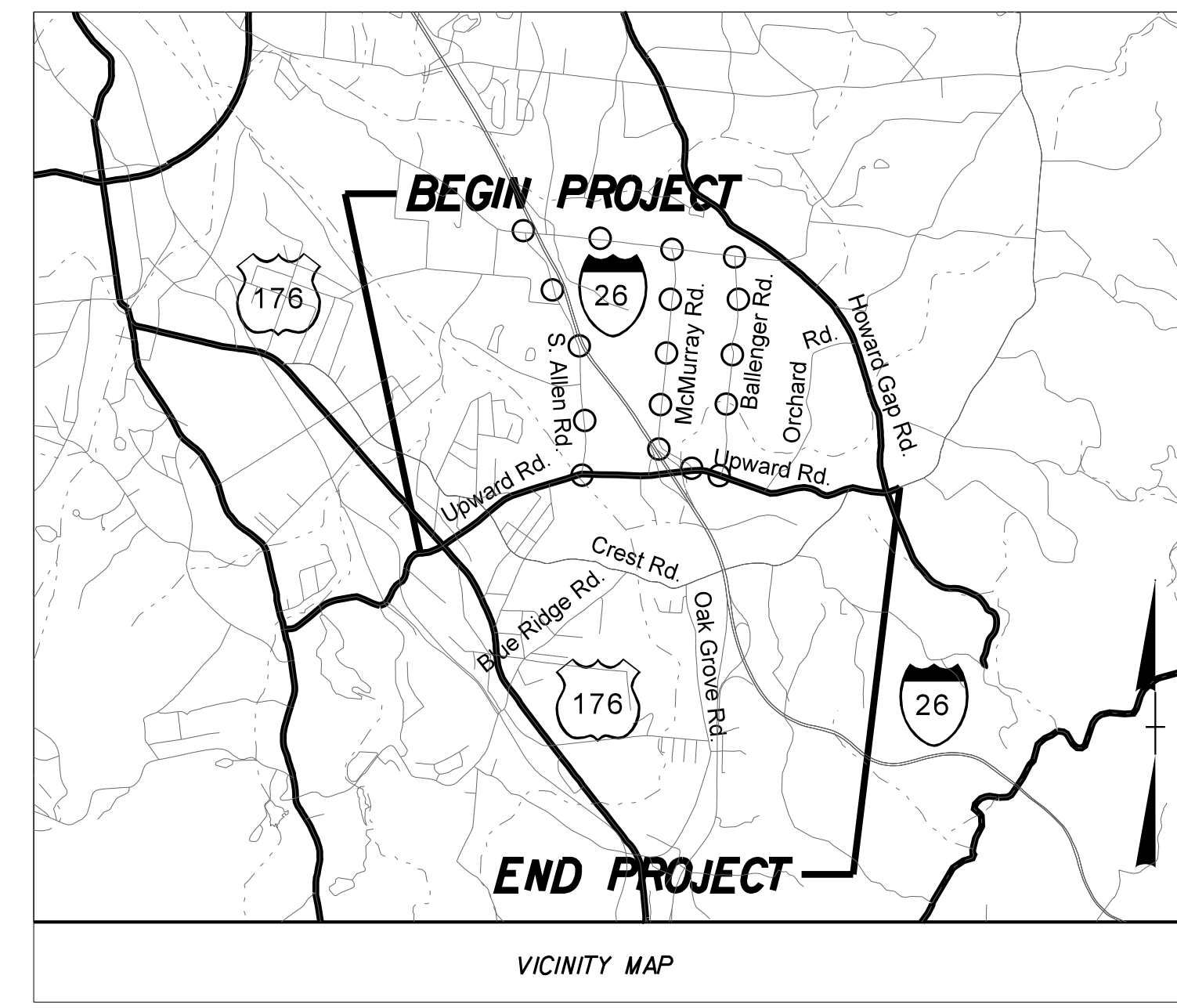
**The documents contained herein were originally issued
and sealed by the individuals whose names and license
numbers appear on each page, on the dates appearing
with their signature on that page.**

**This file or an individual page
shall not be considered a certified document.**

TIP PROJECT: R-4430

CONTRACT: DN00606

SEE SHEET 1-A FOR INDEX OF SHEETS
SEE SHEET 1-B FOR CONVENTIONAL PLAN SHEET SYMBOLS



STATE OF NORTH CAROLINA

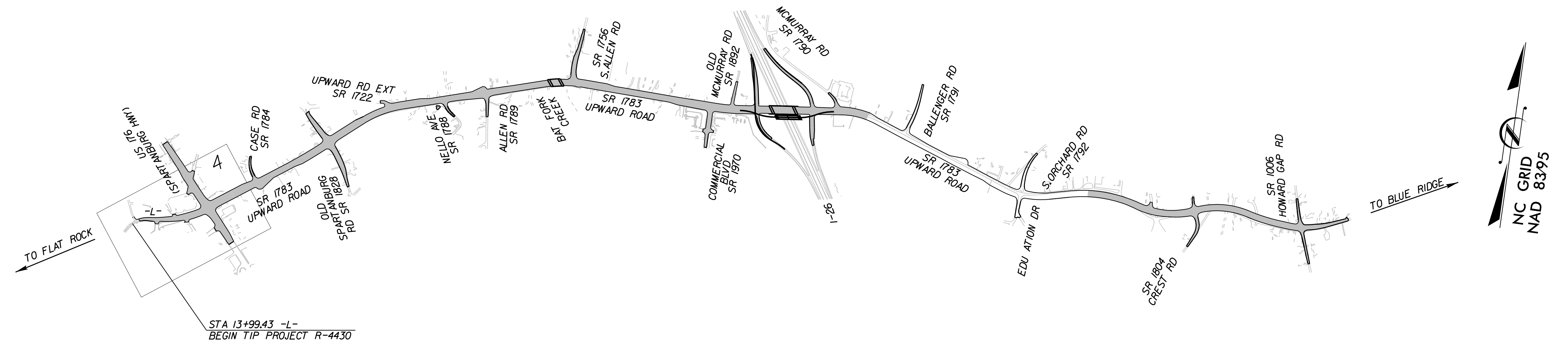
DIVISION OF HIGHWAYS

HENDERSON COUNTY

LOCATION: SR 1783 (N HIGHLAND LAKE RD) FROM US 176 (SPARTANBURG HWY) TO QUAIL COVE LN

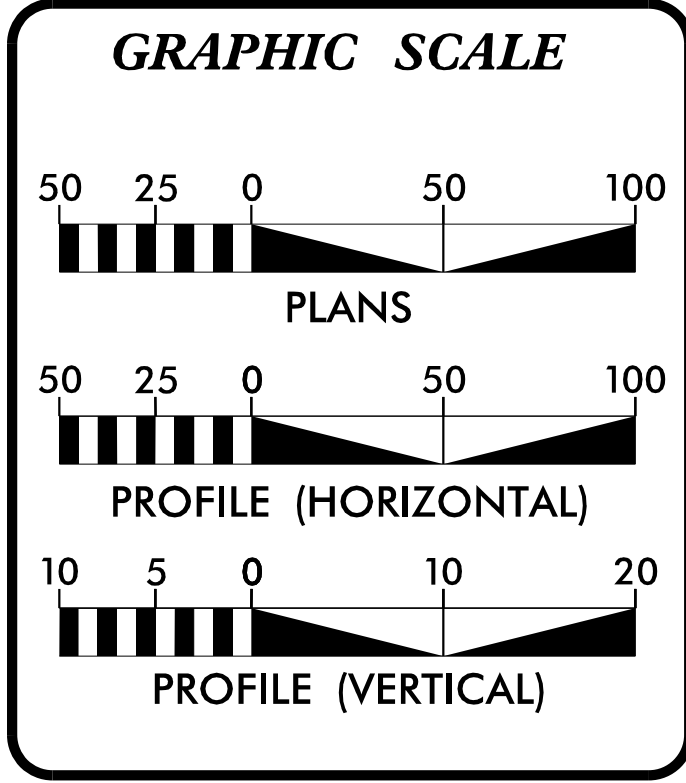
TYPE OF WORK: GRADE, DRAIN, PAVE, CURB & GUTTER, TRAFFIC CONTROL

STATE	STATE PROJECT REFERENCE NO.	SHEET NO.	TOTAL SHEETS
N.C.	R-4430	1	
STATE PROJ. NO.	F.A. PROJ. NO.	DESCRIPTION	
34623.1.1	STP-1783 (1)	P.E.	
34623.3.1	STP-1783 (1)	R / W	
34623.3.1	STP-1783 (1)	UTILITIES	
34623.2.2	STP-1783 (3)	CONSTRUCTION	
34623.2.4		CONSTRUCTION	



NCDOT CONTACT: WANDA AUSTIN, P.E.
DIVISION PROJECT MANAGER
HIGHWAY DIVISION 14

DOCUMENT NOT CONSIDERED FINAL
UNLESS ALL SIGNATURES COMPLETED



DESIGN DATA

ADT 2009	=	21,400 VPD
ADT 2030	=	35,800 VPD
DHV	=	10%
D	=	55%
T	=	5% *
V	=	50 mph

VERTICAL CURVE DESIGN EXCEPTIONS

FUNCTIONAL CLASSIFICATION:
URBAN ARTERIAL

* (TTST 3% + DUAL 2%)

PROJECT LENGTH

LENGTH ROADWAY TIP PROJECT R-4430	=	2.732 MILES
LENGTH STRUCTURE TIP PROJECT R-4430	=	0.065 MILES
TOTAL LENGTH TIP PROJECT R-4430	=	2.797 MILES

PLANS PREPARED FOR NCDOT BY:

2012 STANDARD SPECIFICATIONS

RIGHT-OF-WAY DATE:
DECEMBER 29, 2006

LETTING DATE:
MARCH 16, 2010

JEFFREY W. MOORE, P.E.
PROJECT ENGINEER

J. JASON PACE, P.E.
PROJECT DESIGN ENGINEER

HYDRAULICS ENGINEER

3/1/2017 P.E.

SIGNATURE: _____

ROADWAY DESIGN ENGINEER

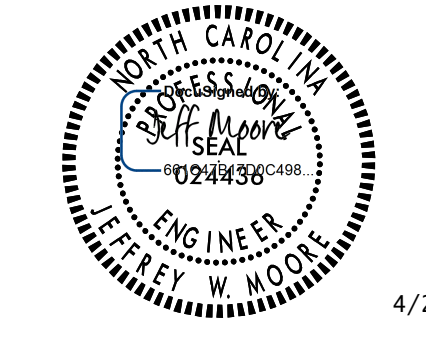
3/1/2017 P.E.

SIGNATURE: _____

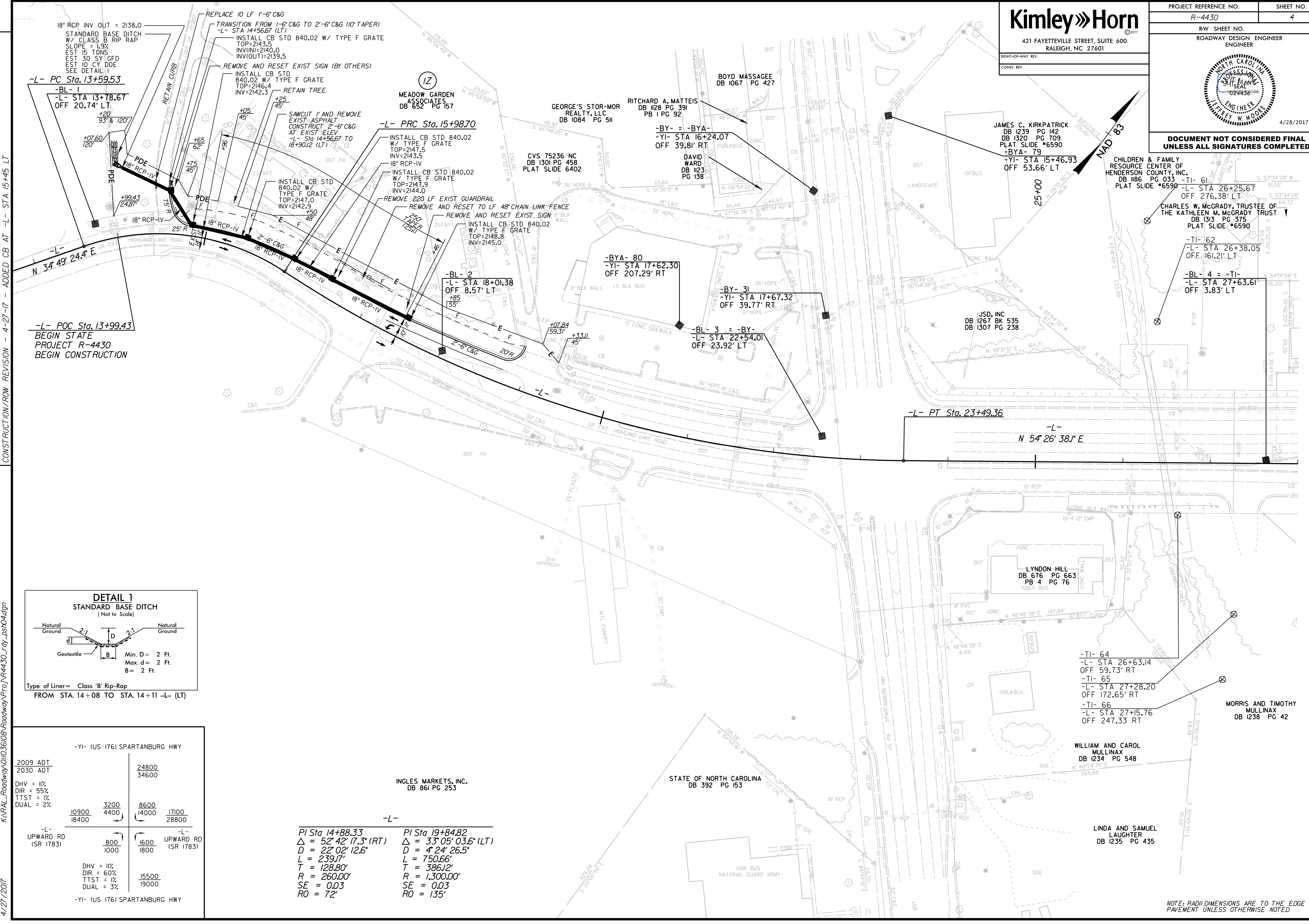
DIVISION OF HIGHWAYS
STATE OF NORTH CAROLINA

STATE HIGHWAY DESIGN ENGINEER

P.E.



REVISIONS
 CONSTRUCTION/RW REVISION - 3-1-17 - ADDED 2'-6" CURB & GUTTER, DRAINAGE SYSTEMS, PDE, AND TCE TO PARCEL
 CONSTRUCTION/RW REVISION - 4-13-17 - REVISED PARCEL I TO IZ; UPDATED ROW AND SURVEY
 CONSTRUCTION/RW REVISION - 4-27-17 - ADDED CB AT -L- STA 15+45 LT



18" RCP INV OUT = 2138.0
STANDARD BASE DITCH
W/ CLASS B RIP RAP
SLOPE = 1.9%
EST 15 TONS
EST 30 CY GFD
EST 10 CY DDE
SEE DETAIL I

-L- PC Sta. 13+59.53
-BL- 1
-L- STA 13+78.67
OFF 20.74' LT

REPLACE 10 LF 1'-6" C&G
TRANSITION FROM 1'-6" C&G TO 2'-6" C&G (10' TAPER)
-L- STA 14+56.67 (LT)
INSTALL CB STD 840.02 W/ TYPE F GRATE
TOP=2143.5
INVIN=2140.0
INVIOUT=2139.5

REMOVE AND RESET EXIST SIGN (BY OTHERS)
INSTALL CB STD 840.02 W/ TYPE F GRATE
TOP=2146.4
INV=2142.3

RETAIN TREE

SAWCUT 1' AND REMOVE EXIST ASPHALT
CONSTRUCT 2'-6" C&G AT EXIST ELEV
-L- STA 14+56.67 TO 18+90.12 (LT)

INSTALL CB STD 840.02 W/ TYPE F GRATE
TOP=2147.5
INV=2143.5

INSTALL CB STD 840.02 W/ TYPE F GRATE
TOP=2147.9
INV=2144.0

REMOVE 220 LF EXIST GUARDRAIL
REMOVE AND RESET TO LF 48' CHAIN-LINK FENCE
REMOVE AND RESET EXIST SIGN

INSTALL CB STD 840.02 W/ TYPE F GRATE
TOP=2148.8
INV=2145.0

-L- POC Sta. 13+99.43
BEGIN STATE
PROJECT R-4430
BEGIN CONSTRUCTION

-L- STA 18+01.38
OFF 8.57' LT

-L- STA 17+62.30
OFF 207.29' RT

-L- STA 17+67.32
OFF 39.77' RT

-L- STA 22+54.01
OFF 23.92' LT

-L- PT Sta. 23+49.36

-L- STA 26+25.67
OFF 276.38' LT

-L- STA 26+38.05
OFF 161.21' LT

-L- STA 27+63.61
OFF 3.83' LT

-L- STA 14+08 TO STA. 14+11 -L- (LT)

MEADOW GARDEN ASSOCIATES
DB 852 PG 157

GEORGE'S STOR-MOR REALTY, LLC
DB 1084 PG 511

RITCHARD A. MATTEIS
DB 1128 PG 391
PB 1 PG 92

DAVID WARD
DB 1123 PG 138

BOYD MASSAGEE
DB 1067 PG 427

CVS 75236 NC
DB 1301 PG 458
PLAT SLIDE 6402

JSD, INC
DB 1267 BK 535
DB 1307 PG 238

LYNDON HILL
DB 676 PG 663
PB 4 PG 76

MORRIS AND TIMOTHY MULLINAX
DB 1238 PG 42

WILLIAM AND CAROL MULLINAX
DB 1234 PG 548

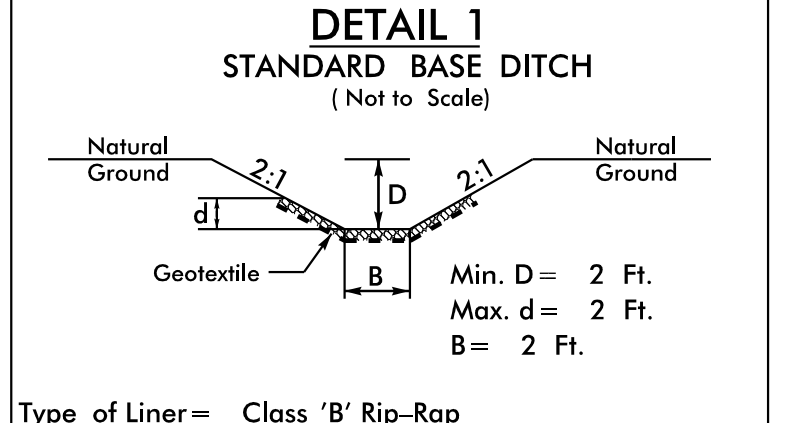
LINDA AND SAMUEL LAUGHTER
DB 1235 PG 435

STATE OF NORTH CAROLINA
DB 392 PG 153

INGLES MARKETS, INC.
DB 861 PG 253

-L- STA 14+88.33
Δ = 52' 42" 17.3" (RT)
D = 22' 02" 12.6"
L = 239.17'
T = 128.80'
R = 260.00'
SE = 0.03
RO = 72'

-L- STA 19+84.82
Δ = 33' 05" 03.6" (LT)
D = 4' 24" 26.5"
L = 750.66'
T = 386.12'
R = 1,300.00'
SE = 0.03
RO = 135'



-YI- (US 176) SPARTANBURG HWY	
2009 ADT	24800
2030 ADT	34600
DHV = 11% DIR = 5% TTST = 1% DUAL = 2%	
10900	3200
18400	4400
14000	8600
17100	28800

-L- UPWARD RD (SR 1783)		-L- UPWARD RD (SR 1783)	
800	1000	1600	1800
DHV = 11% DIR = 60% TTST = 1% DUAL = 3%		15500 19000	

-YI- (US 176) SPARTANBURG HWY

NOTE: RADI DIMENSIONS ARE TO THE EDGE OF PAVEMENT UNLESS OTHERWISE NOTED

K:\RAL_Roadway\01036\08-Roadway\Pro\NR4430_rdy_psf04.dgn
 4/27/2017